

We · support · the
innovations · of · customers

Leak - Proof Flow & Control Solution Partner

The Best Partner
for Value Creation

S-LOK® Condensate Pot

HanSun

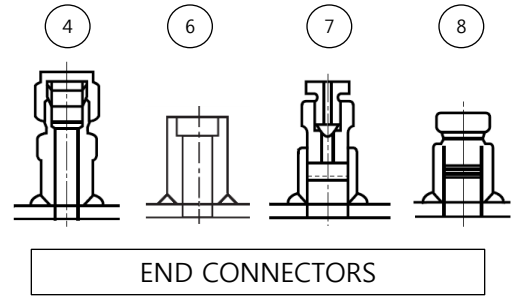
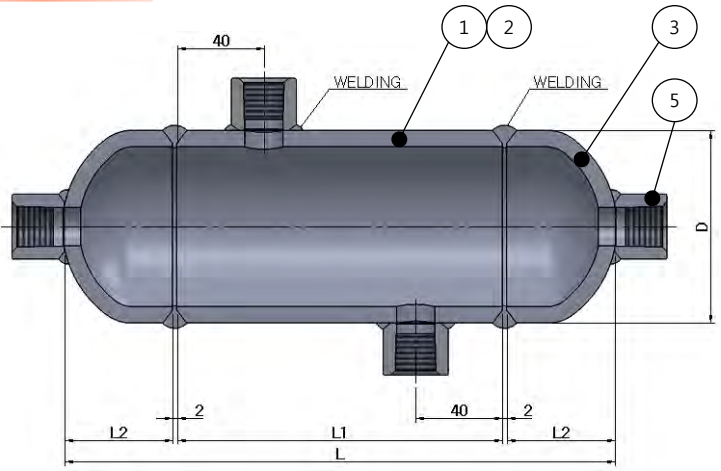
한선엔지니어링(주)
HANSUN ENGINEERING CO., LTD.



HanSun

Condensate Pot

Features



Part List

No.	Description	Material
1	Pipe	3"
2		4"
3	Cap	Refer to below
4	Weld Connector	
5	H/Coupling	Stainless Steel 316 or Carbon Steel
6	Socket Welding H/Coupling	
7	Vent Plug	
8	Hex. Plug	

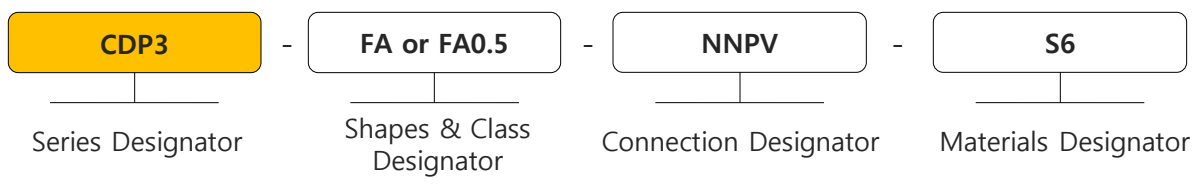
Table of Dimensions

Unit : mm

Pipe	L1	L2	L	D
3"	110	50	214	88.9
4"	229	63.5	360	63.5

※ L1 length is adjustable according to client request to fit the system design.

Ordering Information



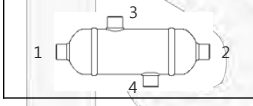
Series Designator	
Pipe Size	Identifier
3"	CDP3
4"	CDP4

Shapes Designer	
Shapes	Identifier
	A
	B
	C
	D
	E
	F

Connection Designer	
Connection	Identifier
½ NPT	A
½ PT	B
½ S.W	C
½ LOK	D
Vent Plug	E
Hex. Plug	F

Materials Designer	
Materials	Identifier
A335 Gr P11	P11
A335 Gr P22	P22
A106 Gr B	106
A312 Gr TP304	S4
A312 Gr TP316	S6
A312 Gr TP304L	S4L
A312 Gr TP316L	S6L

Class Designer (Schedule or Volume)			
Schedule	Identifier	*Volume(ℓ)	Identifier
SCH 40	A	0.5	0.5
SCH 80	B	1.0	1
SCH 160	C	2.0	2
SCH XXS	D	3.0	3



* : L1 length is adjustable according to client request to fit the Volume design.